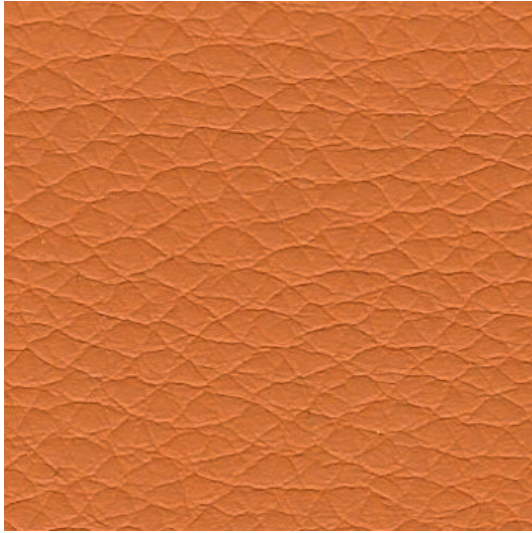


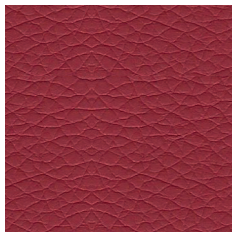


# KUNSTLEDER



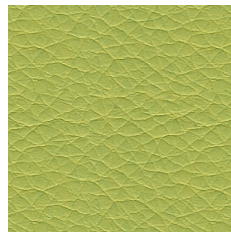
Orange

K 143



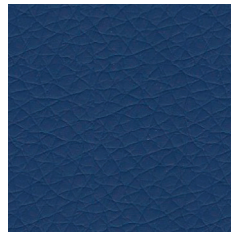
Rot

K 035



Gelbgrün

K 429



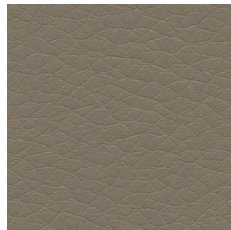
Blau

K 009



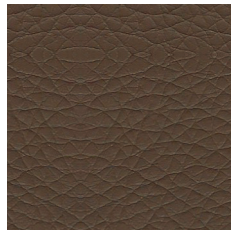
Natur hell

K 710



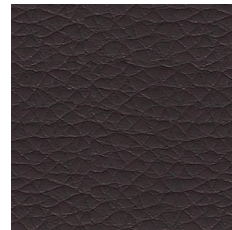
Hellbraun

K 006



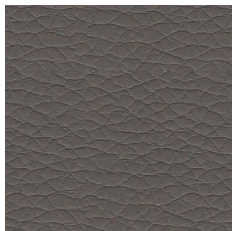
Mittelbraun

K 210



Dunkelbraun

K 250



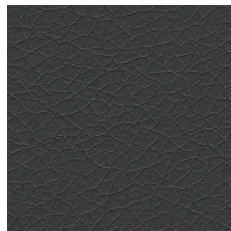
Natur dunkel

K 740



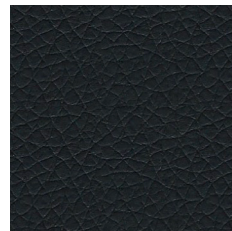
Mittelgrau

K 045



Anthrazit

K 755



Schwarz

K 780

# STOFFEIGENSCHAFTEN

FABRIC CHARACTERISTICS | PROPRIÉTÉS DES TISSUS | PROPIEDADES DE LA TELA



## KUNSTLEDER

ARTIFICIAL LEATHER | CUIR ARTIFICIEL | POLIPIEL

PREISGRUPPE 3 | PRICE GROUP 3 | GROUPE DE PRIX 3 | GRUPO DE PRECIOS 3

### DE MATERIAL

Oberfläche 100% Polyurethan  
Gewebe 65% Polyester, 35% Baumwolle

#### BRANDVERHALTEN

schwer entflammbar nach EN 1021-1

#### GEWICHT

435 g/m<sup>2</sup> +/-10%

#### SCHEUERFESTIGKEIT IN MARTINDALE

> 100.000 Touren

#### FUSSELBILDUNG

keine Fusselbildung

#### SCHADSTOFFGEPRÜFT

### FR MATIÈRE

surface 100% polyuréthane  
tissu tissé 65 % polyester, 35% coton

#### RÉACTION AU FEU

difficilement inflammable selon EN 1021-1

#### POIDS

435 g/m<sup>2</sup> +/-10%

#### RÉSISTANCE À L'ABRASION EN TOURS MARTINDALE

> 100 000 tours

#### PELUCHAGE

aucun peluchage

#### CERTIFIÉ SANS SUBSTANCES NOCIVES

### EN MATERIAL

surface 100% polyurethane  
fabric 65% polyester, 35% cotton

#### FIRE BEHAVIOUR

flame retardant according to EN 1021-1

#### WEIGHT

435 g/m<sup>2</sup> +/-10% (15.34 oz/yd<sup>2</sup> +/-10%)

#### ABRASION RESISTANCE IN MARTINDALE

> 100,000 runs

#### PILLING

no pilling

#### TESTED FOR HARMFUL SUBSTANCES

### ES MATERIAL

superficie 100 % poliuretano  
tejido 65 % poliéster, 35 % algodón

#### REACCIÓN AL FUEGO

difícilmente inflamable según EN 1021-1

#### PESO

435 g/m<sup>2</sup> +/-10%

#### RESISTENCIA A LA ABRASIÓN EN MARTINDALE

> 100 000 ciclos

#### FORMACIÓN DE PELUSAS

no formación de pelusas

#### A PRUEBA DE SUSTANCIAS NOCIVAS