

WOOL



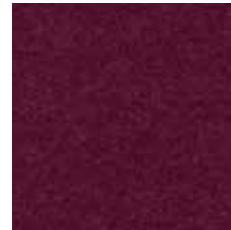
Senfgelb

CUZ 2W



Rot Melange

CUZ 63



Violett

CUZ 21



Violett Melange

CUZ 2T



Orange

CUZ 39



Orange Melange

CUZ 90



Rot

CUZ 18



Hellblau Melange

CUZ 1R



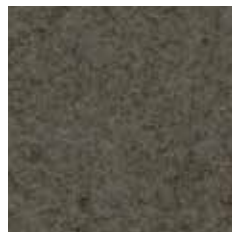
Mittelblau

CUZ 1V



Natur

CUZ 47



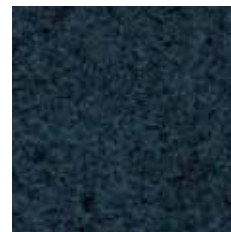
Natur Melange

CUZ 31



Blau Melange

CUZ 1W



Dunkelblau Melange

CUZ 62



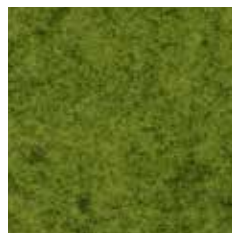
Dunkelblau

CUZ 09



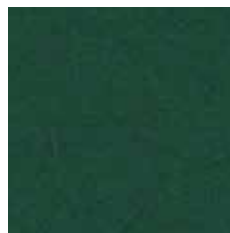
Grün

CUZ 1L



Grün Melange

CUZ 1K



Dunkelgrün

CUZ 1N



Türkis

CUZ 02



Hellgrau Melange

CUZ 28



Grau Melange

CUZ 1E



Anthrazit

CUZ 12



Anthrazit Melange

CUZ 30



Schwarz Melange

CUZ 67



Schwarz

CUZ 08

STOFFEIGENSCHAFTEN

FABRIC CHARACTERISTICS | PROPRIÉTÉS DES TISSUS | PROPIEDADES DE LA TELA



WOOL

PREISGRUPPE 3 | PRICE GROUP 3 | GROUPE DE PRIX 3 | GRUPO DE PRECIOS 3

DE MATERIAL

100% Wolle

BRANDVERHALTEN

schwer entflammbar nach EN 1021 1&2

GEWICHT

460 g/m² +/-5%

SCHEUERFESTIGKEIT IN MARTINDALE

50.000 Touren

FUSSELBILDUNG

4

SCHADSTOFFGEPRÜFT

FR MATIÈRE

100% laine

RÉACTION AU FEU

difficilement inflammable selon EN 1021 1&2

POIDS

460 g/m² +/-5%

RÉSISTANCE À L'ABRASION EN TOURS MARTINDALE

50 000 tours

PELUCHAGE

4

CERTIFIÉ SANS SUBSTANCES NOCIVES

EN MATERIAL

100% wool

FIRE BEHAVIOUR

flame retardant according to EN 1021 1&2

WEIGHT

460 g/m² +/-5% (16.23 oz/yd² +/-5%)

ABRASION RESISTANCE IN MARTINDALE

50,000 runs

PILLING

4

TESTED FOR HARMFUL SUBSTANCES

ES MATERIAL

100% lana

REACCIÓN AL FUEGO

difícilmente inflamable según EN 1021 1&2

PESO

460 g/m² +/-5%

RESISTENCIA A LA ABRASIÓN EN MARTINDALE

50 000 ciclos

FORMACIÓN DE PELUSAS

4

A PRUEBA DE SUSTANCIAS NOCIVAS